

INSTALLATION, OPERATING AND USER MANUAL



ELECTRIC TOWEL RAIL

CAUTION

**READ INSTRUCTIONS CAREFULLY FOR SAFE
INSTALLATION AND OPERATION**

THANK YOU FOR PURCHASING

Thank you for purchasing this product. To ensure correct function and safety, please read and follow all instructions carefully before assembly, installation and use of this heater. Please keep instructions for future reference.

WARRANTY

- This product is covered by a 2-years warranty. The warranty is from the date of purchase.
- Please retain the proof of purchase for any warranty enquires.
- Warranty will be void if there is any damage due to improper usage or modification to the heater.
- Failure to comply with the instructions in this manual may increase the risk of damage or injury and will void the warranty.

BEFORE THE FIRST USE

Read and follow all of the instructions in this manual and store it in a safe place for future reference.

For your convenience record the model number and the purchase receipt in a safe place.

IMPORTANT SAFETY PRECAUTIONS

- Always ensure the power is OFF before performing any maintenance, cleaning or making any adjustment.
- This appliance is not intended for use by persons (including children) with reduced physical, sensory or mental capabilities, or lack of experience and knowledge unless they have been given supervision or instruction concerning the use of the appliance by a person responsible for their safety.
- Children should be supervised to ensure that they do not play with the appliance.
- This is a Class I product and must be earthed.
- All pole disconnection must be incorporated in the fixed wiring in accordance with the wiring rules for hardwire option.

WARNING: All-pole disconnection MUST be included in the fixed electrical installation in accordance with the electrical installation regulations as specified in IEC 60335-1 in order to meet the minimum electrical safety requirements of this standard.

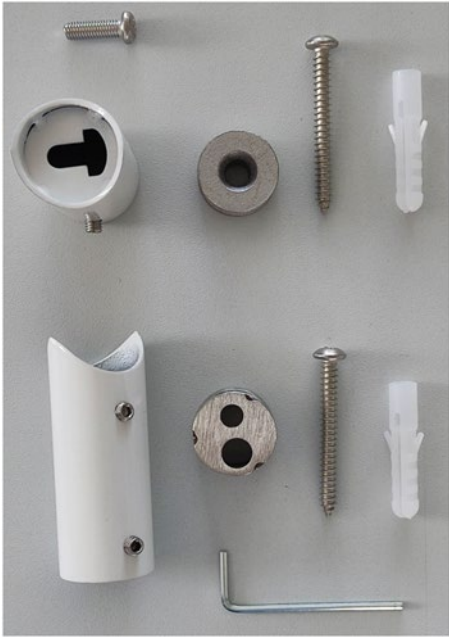
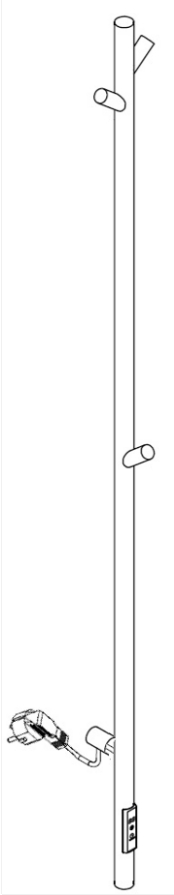
- If the supply cord is damaged, it must be replaced by the manufacturer, its service agent or similarly qualified persons in order to avoid a hazard.
- DO NOT attempt to modify or dismantle the appliance in any circumstances.

PARTS LIST

- Unpack your appliance carefully. Remove all parts and hardware.
- Lay out all the components on a smooth surface and make sure no components are missing before assembling. If parts are missing, return the complete product to the place of purchase for inspection or replacement.
- Check whether the heater has been damaged during transport. Do not operate/install any product

which appears damaged in any way. Return the complete product to the place of purchase for inspection, repair or replacement.

- Examine all parts, which should include the following:



1 pc Heated towel rail
3 pcs Spacers roller 55 mm (top spacer roller, low spacer roller – with plug or hard wire option)
1 pc M5 × 16 Screw
4 pcs M5 × 4 Screw and 3 pcs M5 × 6 Screw
2 pcs Mounting screws and wall plugs
1 pc Allen key
1 pc Round base with slots
1 pc Round base part

INSTALLATION REQUIREMENT

! WARNING: DO NOT connect the appliance to the mains voltage until it is fully installed in the desired location.

- The appliance is supplied with a supply cable and plug. Check that the installation location in the ceiling/wall has access to a socket-outlet that is connected to a wall switch. If it does not, please contact a licensed electrician to arrange the installation of the socket outlet and wall switch before continuing.

WARNING: The socket-outlet and switch must be located so that they cannot be touched by persons in the bath or shower.

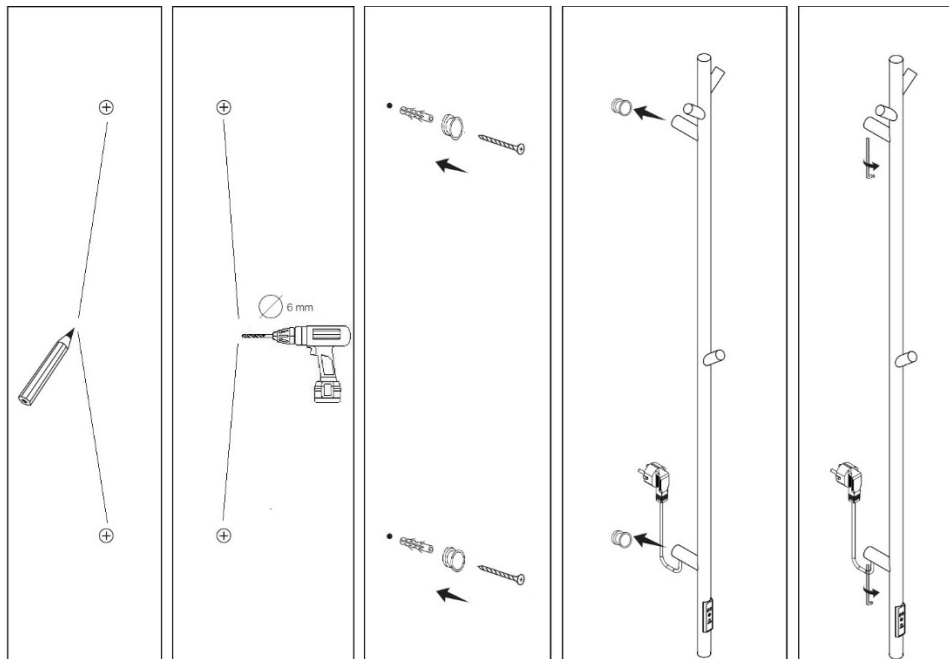
- The appliance is also supplied with accessories for hard-wire option. **In this case, the appliance MUST BE installed by a licensed electrician.**
- All wiring and installation of the appliance must adhere to the local council regulation and the latest local and national wiring rules.

WARNING: To avoid a hazard for very young children, this appliance should be installed so that the lowest heated rail is at least 600 mm above the floor.

- Keep the appliance at least 100mm away from the surrounding surface.
- This product is rated IP44 and it is suitable for indoor bathroom areas. This product is NOT suitable for outdoor areas.
- The mounting point must be able to support at least 4 times the weight of the appliance.

WARNING: To prevent strangulation and shock hazard to children, the flexible wiring connected to this appliance shall be effectively fixed to the wall.

INSTALLATION INSTRUCTIONS



I – Installation of the upper bracket on the wall:

1. Mount the round base to the wall using a suitable screw and wall plug;
2. Attach the upper spacer roller to the towel rail body using an M5×16 screw;

II – Installation of the lower wall bracket:

1. At a distance of 714 mm from the center of the upper base, mount the lower base with cut-outs using a suitable screw and wall plug;

2.a Plug-in version:

Thread the lower spacer roller of the towel rail along the power cable to the towel rail body and fix it with M5×4 screws;

Finally, slide the towel rail onto both bases and fix it with M5×6 screws.

2.b Hardwired version:

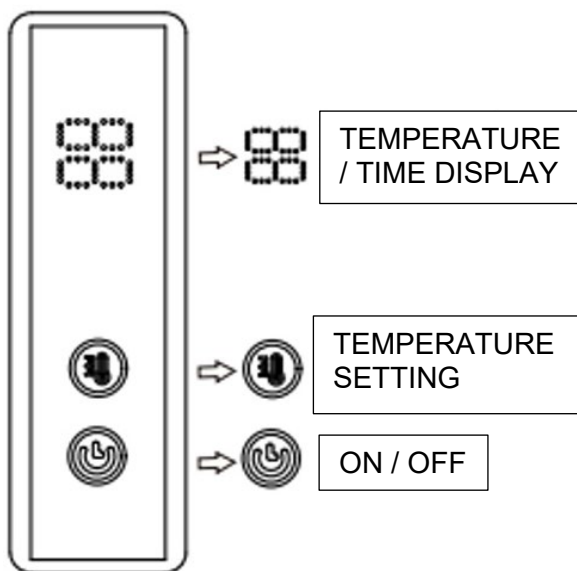
Shorten the power cable as needed. Replace the existing lower roller with a new one.

Thread it along the cable to the towel rail body and fix it with M5×4 screws. Then perform the appropriate electrical connection;

Finally, slide the towel rail onto both bases and fix it with M5×6 screws.

OPERATING INSTRUCTIONS

- After completing the installation, remove the protective film from the control panel.
- Connect the appliance to the mains socket and press and hold the main power button (ON/OFF) for 2 seconds to switch on the towel heater. If the appliance is not in use, switch it off using the main power button (ON/OFF).



- Temperature setting:
Press the button to set the desired heating temperature in the range of 40 ÷ 60 °C, in steps of 5 °C.
- On/Off:
Press and hold the button for 2 seconds to turn the appliance on or off. When turned off, it remains in standby mode.
- Heating time setting:
Press the button to set the time from 0 to 8 hours, in steps of 1 hour.

Note: After turning the appliance off and on again, it will automatically remember the last set time by default.

CARE AND CLEANING

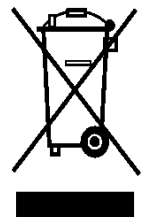
! WARNING: Always turn OFF the power at the mains switch or unplug from the socket-outlet before performing any maintenance or attempting to clean your appliance.

- It is recommended to wipe with a damp clean cloth with NO organic solvents or cleaners.
- **DO NOT use the water hose or high-pressure water to clean the appliance. It could damage the product and create the possibility of an electrical shock.**
- DO NOT soak or immerse your appliance in the water or other liquids. It could damage the product and create the possibility of an electrical shock.

SPECIFICATION		
Colour	matte black	matte white
Insulation class	Class I.	
Protection class	IP44 after installation	
Operating voltage	230 V AC, 50 Hz	
Maximum el. input	37 W	
Connection	coiled cord with plug, 1,2 m max.	
Overall dimensions	1180 x 124 x 80 mm	
Weight	1.5 kg	

PRODUCT DISPOSAL INSTRUCTIONS - THE EUROPEAN UNION

The crossed out symbol of a bin displayed on your product is a reminder that, within the European Union, all electric and electronic products must be collected separately at the end of their service life. Do not dispose of these products as unsorted municipal waste. Bring these products to a waste collection facility to prevent environmental or health damage due to uncontrolled waste disposal and to promote sustainable utilization of material resources. Disposal information can be obtained from product vendors, local waste management authorities or relevant national manufacturers.



The manufacturer disclaims all liability and responsibility for any inaccuracies contained in this document due to printing or translation errors. The manufacturer reserves the right to make any changes to its products deemed to be necessary or beneficial.